

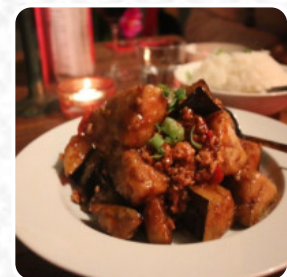
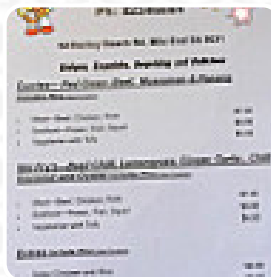


Tongue Thai'D Menu

<https://menuweb.menu>

54 Henley Beach Road, Mile End, Adelaide, SA, MILE END, Australia

+61882346884



On this site, you will find the **complete menu** of **Tongue Thai'D** from MILE END. Currently, there are **47** dishes and drinks available. A recent visit to Tongue Thai'd restaurant in Adelaide brought mixed reviews from customers. Some found the dishes overly sweet and unenjoyable, with rubbery noodles and cold, uninviting ambiance. However, others praised the friendly service and flavorful dishes, particularly highlighting the aubergine and red duck curry. While some felt the prices were not the most budget-friendly, many noted the fresh ingredients and traditional flavors that keep them coming back. Overall, experiences at Tongue Thai'd seem to vary, with some diners enjoying the flavors while others were left disappointed with the quality of the food.

Tongue Thai'D Menu



Salads

BEEF SALAD

Pizza

SPECIAL PIZZA

Seafood

CALAMARI

Tapas

EGGPLANT TAPAS

Mexican Dishes

CHILLI SAUCE

Asian Specialties

SATAY

Thai Dishes

PAD THAI

Chinese Dishes

CASHEW CHICKEN

Youyou Spezial

SPICY BEEF

Hot Drinks

COFFEE

Asian

SPRING ROLL

Kalared Flaming Wok

THAI GREEN CURRY

Sauce Dish

SATAY SAUCE

Malaysian / Oriental Cuisine

LAKSA

Entrées

FRIED TOFU

SPRING ROLLS

Drinks

DRINKS

BEER

Chicken

FRIED CHICKEN

CHICKEN WINGS

Indian

CHICKEN CURRY

CHICKEN CURRY

Restaurant Category

VEGETARIAN

VEGAN

Thai

THAI CHICKEN

CHICKEN SATAY

Tongue Thai'D Menu



GREEN CURRY

RED CURRY

These Types Of Dishes Are Being Served

SOUP

CHICKEN

FISH

MEAT

SALAD

Ingredients Used

VEGETABLES



EGG

COCONUT

CHILI

CHEESE

TOFU

SEAFOOD

PORK MEAT

PRAWNS

BEEF

SOFT SHELL CRAB

DUCK

FRUIT

VEGETABLES

Tongue Thai'D

54 Henley Beach Road, Mile
End, Adelaide, SA, MILE END,
Australia

Opening Hours:

Tuesday 17:30-21:30

Wednesday 17:30-21:30

Thursday 11:30-14:30 17:30-
21:30

Friday 11:30-14:30 17:30-21:30

Saturday 17:30-21:30

Sunday 17:30-21:30

Made with [Menu](#)

