

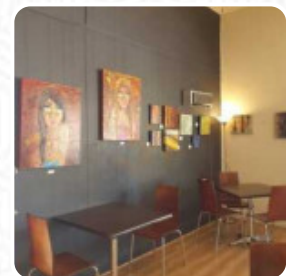
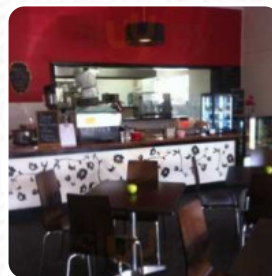
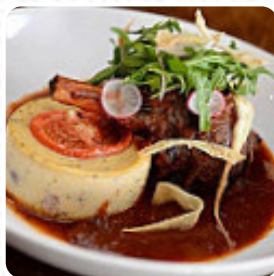
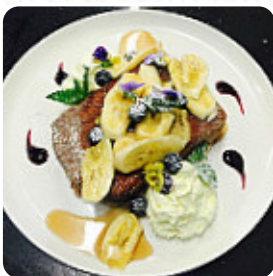


The Table Cafe Menu

<https://menuweb.menu>

28 - 30 Barossa Valley Way | Opposite the Village Green, Lyndoch, South Australia 5351, Australia, LYNDPOCH

+61885244074 - <http://thetablecafe.com.au>



A comprehensive [menu](#) of The Table Cafe from [LYNDPOCH](#) featuring all 71 meals and drinks can be found here on the menu. Come enjoy locally-sourced, freshly made breakfast, lunch, and dinner seven days a week at our establishment. Pair your meal with excellent Barossa wines and modern cocktails. We offer award-winning Campos coffee and delicious house-made cakes. Don't forget to try a glass of wine with a cheese plate from Barossa Valley Cheese Company. Our food is served from 8am until late, with light meals available outside normal meal times. Stay tuned for the upcoming opening of our new wine garden!.

The Table Cafe Menu



Oriental Dishes

FALAFEL

Pizza

SPECIAL PIZZA

Burger

BEEF BURGER

Gnocchi

GNOCCHI

Snacks

BRUSCHETTA

Sandwiches

EGG ROLLS

Fish Dishes

FISH & CHIPS

Meat Dishes

MEATBALLS

Drinks

BEER

Pork

PORK BELLY

Chicken

CRISPY CHICKEN

Sauces

HOLLANDAISE

Main Course

PERI PERI CHICKEN

Potatoes

HASH BROWNS

Juices Small (0,3L)

FRESH ORANGE JUICE

American Food

EGGS BENEDICT

Asian

EGG ROLL

Hotcakes & French Toast

BRIOCHE FRENCH TOAST

Hot Drink

HOT CHOCOLATE

Mexican-American Food

EMPANADAS

Toast

FRENCH TOAST

TOAST

Breakfast

SCRAMBLED EGGS

The Table Cafe Menu



BIG BREAKFAST

Starters & Salads

POTATO CHIPS

FRENCH FRIES

Dessert

BANANA BREAD

BIKO

Hot Drinks

TEA

COFFEE

Restaurant Category

VEGAN

ITALIAN

Coffee

ICED COFFEE

ICED LATTE

LATTE

Salads

HALLOUMI SALAD

CAESAR SALAD

CHICKEN SALAD

THAI BEEF SALAD

Soft Drinks



ORANGE JUICE

ORANGE JUICE

JUICE

ORANGE JUICE

These Types Of Dishes Are Being Served



BURGER

LAMB

BREAD

SALAD

FISH

SOUP

CHICKEN

SPAGHETTI

TOSTADAS

DESSERTS

PANINI

PASTA

Ingredients Used



MUSHROOMS

HONEY

PRAWNS

BEANS

SAUSAGE

ITALIAN SAUSAGE

SEAFOOD

CHEESE

CHOCOLATE

BANANA

BACON

CORN

QUINOA

EGG

The Table Cafe Menu



BEEF

PORK MEAT

The Table Cafe

28 - 30 Barossa Valley Way |
Opposite the Village Green,
Lyndoch, South Australia 5351,
Australia, LYNDPOCH

Opening Hours:

Monday 9:00-14:00
Tuesday 9:00-14:00
Wednesday 9:00-14:00
Thursday 9:00-14:00
Friday 9:00-14:00 17:00-20:00
Saturday 17:00-20:00 9:00-15:00
Sunday 9:00-15:00

Made with [Menu](#)

