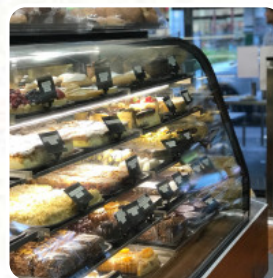




# The Melbourne Bakehouse Menu

<https://menuweb.menu>

210 Bay St, Melbourne, Victoria 3207, Australia, Port Melbourne  
+61396460898 - <http://www.melbournebakehouse.com.au>



On this webpage, you will find the **complete [menu](#)** of **The Melbourne Bakehouse** from Port Melbourne.  
Currently, there are **29** dishes and drinks available.

# The Melbourne Bakehouse Menu



## Sauces

GRAVY

## Chinese Dishes

PEPPER STEAK

## Hot Pies

SAUSAGE ROLL

## French

CROISSANT

## Mixed Specialties

BAKLAVA

## Hot Drinks

COFFEE

TEA

## Restaurant Category

FRENCH

GREEK

## Sandwiches

B.L.T

B.L.T.

BLT

## Dessert



DONUTS

BREAD PUDDING

TIRAMISU

APPLE CRUMBLE

## These Types Of Dishes Are Being Served

CHICKEN

MEAT

TUNA STEAK

BREAD

SALAD

## Ingredients Used



BEEF

VEGETABLES

NUTELLA

SAUSAGE

TOMATO

CHOCOLATE

BACON

LETTUCE

FRUIT

EGG

HONEY

# The Melbourne Bakehouse Menu



---

## The Melbourne Bakehouse

210 Bay St, Melbourne, Victoria  
3207, Australia, Port Melbourne

### Opening Hours:

Monday 05:30 -19:00  
Tuesday 05:30 -19:00  
Wednesday 05:30 -19:00  
Thursday 05:30 -19:00  
Friday 05:30 -19:00  
Saturday 05:30 -19:00  
Sunday 05:30 -19:00

Made with [Menu](#)

