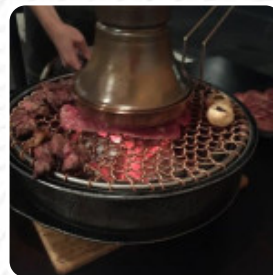




Michu Korean Charcoal Bbq Menu

<https://menuweb.menu>
6 Lawrence St, Blackburn South, Australia
+61411334799, +61423764733



A comprehensive [menu](https://menuweb.menu) of Michu Korean Charcoal Bbq from Blackburn South featuring all 28 menus and drinks can be found here on the menu. Nestled in a cozy corner of Melbourne, this Korean BBQ restaurant offers an authentic dining experience with an emphasis on quality and flavor. The charcoal grilling imparts a delightful smokiness to the tender cuts of meat, complemented by generous portions and an impressive selection of side dishes. While slightly pricier than typical BBQ spots, the attentive service and inviting atmosphere make it worth every penny. Ideal for couples and families alike, the venue strikes a balance between intimate dining and accommodating larger groups. With consistent five-star ratings across the board, this hidden gem is a must-visit for K-BBQ enthusiasts.

Michu Korean Charcoal Bbq Menu



Salads

COLESLAW

Burger

BBQ PORK

Gnocchi

GNOCCHI

Drinks

BEER

Sauces

BBQ

Beef Dishes

BULGOGI

Dessert

CREPES

Steaks

RIBEYE STEAK

From The Grill

RIBS

Hot Drinks

TEA

Sides

DIPPING SAUCE

Restaurant Category

VEGETARIAN

Ingredients Used



CHEESE

TOFU

KIMCHI

SEAFOOD

SCALLOPS

PRAWNS

PORK MEAT

BEEF

These Types Of Dishes Are Being Served



CHICKEN

SIRLOIN STEAK

NOODLES

SALAD

MEAT

LAMB

SOUP

OYSTERS

Michu Korean Charcoal Bbq Menu



Michu Korean Charcoal Bbq

6 Lawrence St, Blackburn South,
Australia

Opening Hours:

Monday 17:30 -23:00

Tuesday 17:30 -23:00

Wednesday 17:30 -23:00

Thursday 17:30 -23:00

Friday 17:30 -23:00

Saturday 17:30 -23:00

Sunday 17:30 -23:00

Made with [Menu](#)

