

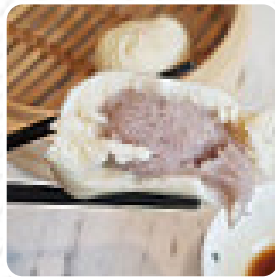


Din Tai Fung Dǐng Tàì Fēng Sentosa Menu

<https://menuweb.menu>

26 Sentosa Gateway #01-217, Central Singapore, Singapore, 098138

<http://www.dintaifung.com.sg>



Here you can find the [menu](#) of **Din Tai Fung Dǐng Tàì Fēng Sentosa** in Central Singapore. At the moment, there are **20** dishes and drinks on the menu.

Din Tai Fung Ding Tai Feng Sentosa Menu



Gnocchi

GNOCCHI

Fried Rice

FRIED RICE

Noodle In Soup

TAIWANESE

These Types Of Dishes Are Being Served

NOODLES

MEAT

Restaurant Category

VEGAN

DESSERT

VEGETARIAN

Ingredients Used



PRAWNS

BEEF

DUCK

CHILI

SHRIMP

BEANS

VEGETABLES

VEGETABLES

GINGER

HONEY

MILK

EGG

Din Tai Fung Ding Tai Feng Sentosa

26 Sentosa Gateway #01-217,
Central Singapore, Singapore,
098138

Opening Hours:

Monday 11:00 -22:00
Tuesday 11:00 -22:00
Wednesday 11:00 -22:00
Thursday 11:00 -22:00
Friday 11:00 -22:00
Saturday 10:00 -22:00
Sunday 10:00 -22:00

Made with menuweb.menu

