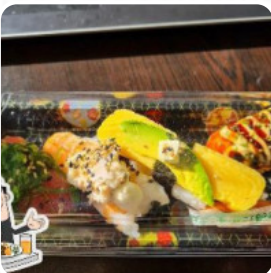




Rimi Sushi Menu

<https://menuweb.menu>
182 High St, Hawera, New Zealand
+6462784777 - <https://182>



A comprehensive [menu](#) of Rimi Sushi from Hawera covering all 17 menus and drinks can be found here on the menu.

Rimi Sushi Menu



Salads

CHICKEN SALAD

Sushi Rolls

SUSHI

Gnocchi

GNOCCHI

Side Dishes

RICE

Chicken

ARROZ CON POLLO

Chicken Dishes

GARLIC CHICKEN

Fish

SALMON ROLL

Hot Drinks

TEA

Sides

SOY SAUCE

These Types Of Dishes Are Being Served

FISH

MEAT

SALAD

CHICKEN

NOODLES

Ingredients Used

SEAFOOD

PORK MEAT

GARLIC

SALMON

PRAWNS

CHICKEN TERIYAKI

MISO

Rimi Sushi

182 High St, Hawera, New Zealand

Opening Hours:

Tuesday 08:30-17:30

Wednesday 08:30-17:30

Thursday 08:30-17:30

Friday 08:30-17:30

Saturday 08:30-17:30

 gallery image