

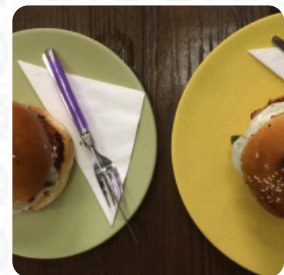
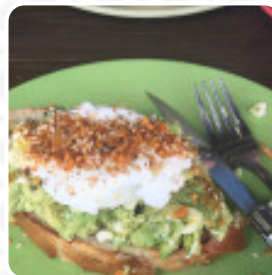


Bumble Bean Cafe Menu

<https://menulist.menu>

5 Westralia St | Stuart Park Shops, Darwin, Northern Territory 0820, Australia, STUART PARK

+61879788171,+61497285861 - <https://www.bumblebeanchocolates.com>



Here you will find the [menu](#) of **Bumble Bean Cafe** in STUART PARK. At the moment, there are **20** dishes and drinks on the menu. Bumble Bean Chocolates is Darwin's premier chocolate factory, established in 2011. Located in Stuart Park, our factory and retail shop offer a wide range of handcrafted chocolates created by our head Chocolatier Leo Cleanthous. We specialize in delicate truffles, vegan chocolates, local territory flavors, coated goods, and childhood favorites like honeycomb and freckles. Open Wednesday to Friday from 10am to 3pm and Saturday from 9am to 2pm, we also cater to custom orders and events. Come visit us and experience our delectable creations - we guarantee you'll be back for more!.

Bumble Bean Cafe Menu



Chicken

CHICKEN PARMESAN

Dessert

MUFFINS

Soft Drinks

ORANGE JUICE

Hot Drinks

COFFEE

Coffee

CAPPUCCINO

Hot Drink

HOT CHOCOLATE

Brunch Delights

SMASHED AVOCADO

Malaysian / Oriental Cuisine

LAKSA

Indian

CHAI LATTE

CHAI

These Types Of Dishes Are Being Served



CHICKEN

PANINI

BREAD

SANDWICH

Ingredients Used

FETA

PARMESAN

CHOCOLATE

EGG

AVOCADO

MILK

Bumble Bean Cafe

5 Westralia St | Stuart Park
Shops, Darwin, Northern Territory
0820, Australia, STUART PARK

Opening Hours:

Made with [Menu](#)

