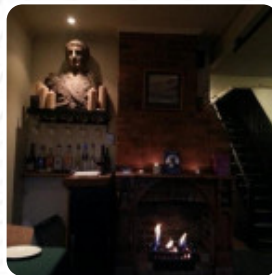
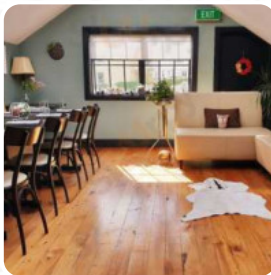




## Bistro On Willis Menu

<https://menuweb.menu>

270 Willis Street, Wellington 6040, New Zealand, Churton Park Village New Zealand  
+6443828882 - <http://www.bistroonwillis.co.nz>



Here you can find the [menu](#) of **Bistro On Willis** in Churton Park Village New Zealand. At the moment, there are **16** courses and drinks on the card.

# Bistro On Willis Menu



## Non Alcoholic Drinks

WATER

## Sushi Rolls

SUSHI

## Pasta

CARBONARA

## Vegetarian

GREEN BEANS

## Sauces

GRAVY

## Hot Drinks

COFFEE

## Dessert

CHEESECAKE

TIRAMISU

## Restaurant Category

ITALIAN

DESSERT

## Ingredients Used

DUCK

BEANS

## These Types Of Dishes Are Being Served

MEAT

CHICKEN

LAMB

PASTA

---

## Bistro On Willis

270 Willis Street, Wellington  
6040, New Zealand, Churton  
Park Village New Zealand

Opening Hours:  
---

Made with [menuweb.menu](https://menuweb.menu)

