

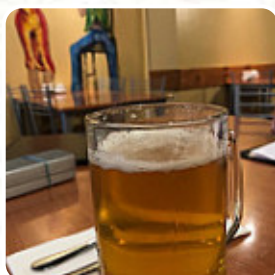
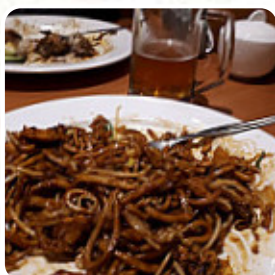


The Long On Brandon Menu

<https://menuweb.menu>

22 Brandon St, Wellington New Zealand, New Zealand

<https://www.ortega.co.nz>



Here you can find the [menu](#) of **The Long On Brandon** in Wellington New Zealand. At the moment, there are 20 courses and drinks on the menu.

The Long On Brandon Menu



Gnocchi

GNOCCHI

Seafood

PRAWN

Side Dishes

RICE

Chicken

ARROZ CON POLLO

Appetizer

CEVICHE

Dessert

COCONUT RICE

Malaysian / Oriental Cuisine

LAKSA

Indian



PEPPER CHICKEN

ROTI

CHICKEN CURRY

These Types Of Dishes Are Being Served

CHICKEN

NOODLES

TUNA STEAK

Ingredients Used

BEEF

SEAFOOD

SHRIMP

MILK

COCONUT

MINT

YELLOWTAIL

The Long On Brandon

22 Brandon St, Wellington New Zealand, New Zealand

Opening Hours:

Monday 17:30-00:00
Tuesday 17:30-00:00
Wednesday 17:30-00:00
Thursday 17:30-00:00
Friday 17:30-00:00
Saturday 17:30-00:00
Sunday 17:30-00:00

Made with menuweb.menu

