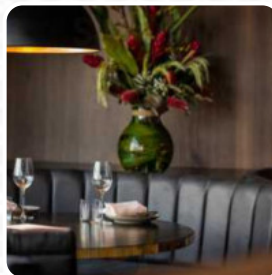




Hiakai Menu

<https://menuweb.menu>
40 Wallace Street, Wellington, New Zealand 6021
<http://www.hiakai.co.nz/>



On this website, you can find the **complete [menu](#) of Hiakai** from Wellington. Currently, there are **15** meals and drinks up for grabs. Hiakai, a noteworthy culinary destination in Wellington, promises a unique dining experience steeped in Māori and Pacific flavors, though opinions on its execution vary. Guests rave about the attentive service and inviting atmosphere, creating a cozy and intimate setting. Many enjoyed the exceptional food presentations and drink pairings that tell a cohesive story throughout the meal. However, some felt the offerings lacked the adventurous spirit seen in the past and noted that the dinner can stretch over four hours. While it may be pricier, patrons recognize the effort and artistry that makes dining at Hiakai an unforgettable occasion.

Hiakai Menu



Vegetarian

CAULIFLOWER

Drinks

DRINKS

Hot Drinks

COFFEE

Restaurant Category

VEGETARIAN

DESSERT

Ingredients Used

CHOCOLATE

DUCK

BEEF

MUSHROOMS

SEAFOOD

These Types Of Dishes Are Being Served

ICE CREAM

MEAT

FISH

MUSSELS

OYSTERS

Hiakai

40 Wallace Street, Wellington,
New Zealand 6021

Opening Hours:

Wednesday 17:30-22:00

Thursday 17:30-22:00

Friday 17:30-22:00

Saturday 17:30-22:00

Made with menuweb.menu

