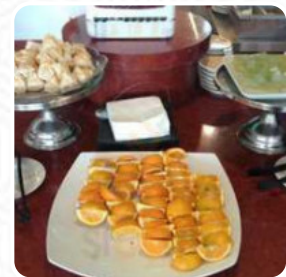
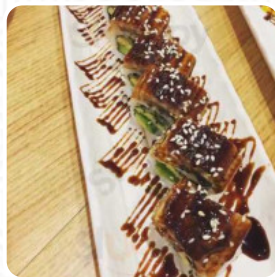


## Sushi Mame Menu

<https://menuweb.menu>

5/209 Boundary Street, West End, Brisbane 4101., Australia

+61738449688, +61738464626



**The menu** of **Sushi Mame from Brisbane** comprises about **64** different dishes and drinks. On average you pay about A\$11 for a dish / drink. West End Sushi Station Buffet is a hidden gem offering a mix of Asian cuisines in a cozy setting. While the authenticity may not be 100%, the quality and affordability make it a great spot to satisfy your cravings with friends. The restaurant is known for its fresh and delicious food, particularly the dumplings and [sushi](#). The all-you-can-eat option is a steal at \$15, providing a wide variety of hot food choices in addition to sushi. The staff are friendly and attentive, making the dining experience pleasant and enjoyable. Whether you're a sushi lover or a fan of Asian cuisine, this restaurant is definitely worth a visit.

# Sushi Mame Menu



## Salads

SEAWEED SALAD A\$5

## Sashimi

MIX SASHIMI A\$16

## Sushi Rolls

SUSHI

## Seafood

CALAMARI

## Side Dishes

STEAMED RICE A\$3

## Sauces

MAYONNAISE A\$1

## Indian

SOFT DRINKS A\$3

## Maki Sushi

HAND ROLL A\$5

## Soft Drinks

CALPIS WATER A\$4

## Bowls

TERIYAKI CHICKEN RICE BOWL A\$10

## Udon

TEMPURA VEGETABLE UDON A\$13

## Bento Box

SASHIMI BENTO A\$20

## Snacks & Sides

DIM SIM A\$5

## Chicken Wings

WINGS

## Tempura Rollen

MIX TEMPURA A\$12

## Lunch Special

TEMPURA PRAWN UDON A\$14

## California Rolls Ohne Fisch

YAKITORI CHICKEN A\$6

## Others

RICE PAPER A\$4

## Hot Drinks

JAPANESE GREEN TEA A\$4

## Rice Bowls

KARAAGE CHICKEN RICE BOWL A\$10

## Boxes

TUNA SASHIMI A\$14

## From The Ocean

PRAWN TEMPURA A\$9

# Sushi Mame Menu



## Non-Alcoholic Beverages

MOUNT FRANKLIN SPARKLING WATER A\$4

## Bento Boxes

KARAAGE CHICKEN BENTO A\$15

## Non Alcoholic

MOUNT FRANKLIN WATER A\$3

## Sushi

SUSHI ROLL A\$4

## Pine

NIGIRI SUSHI A\$4

## Bento Lunch

TEMPURA VEGETABLE BENTO A\$16

## Ramen Extra Toppings

PICKED GINGER A\$1

## Noodles And Bowls (Archived)

CURRY CHICKEN RICE BOWL A\$10

## Fusion Rice Bowl

UNAGI (GRILLED EEL) RICE BOWL A\$15

## Sushi Ship

CRAB SALAD SHIP A\$4

## Entrées

TAKOYAKI A\$6

CHICKEN KARAAGE A\$7

## Mains

TEMPURA PRAWN BENTO A\$17

CHICKEN KATSUDON RICE BOWL A\$10

## Chicken

FRIED CHICKEN

CHICKEN WINGS

## Japanese Specialties

MISO SOUP A\$3

VEGETABLE TEMPURA A\$8

## Asian

GYOZA A\$5

SPRING ROLL A\$5

## Restaurant Category

VEGETARIAN

DESSERT

## These Types Of Dishes Are Being Served

CHICKEN

SOUP

## Assorted Sushi Platter

LARGE SUSHI PLATTER A\$58

SMALL SUSHI PLATTER A\$38

MEDIUM SUSHI PLATTER A\$48

# Sushi Mame Menu



## Ingredients Used



SALMON  
TOFU  
EEL

FRUIT  
MISO

## Uncategorized

UNAGI (GRILLED EEL) BENTO      A\$18



- LOBSTER SALAD SHIP      A\$5
- PRAWN KATSUDON  
RICE BOWL      A\$12
- SEAWEED SHIP      A\$4
- TUNA SALAD SHIP      A\$4
- POKKA ICE TEA      A\$4
- CRUMBED CHICKEN UDON      A\$11
- CRUMBED CHICKEN BENTO      A\$15
- CASCADE SPARKLING DRINKS      A\$4
- GOULBURN VALLEY JUICE      A\$4

# Sushi Mame

5/209 Boundary Street, West  
End, Brisbane 4101., Australia

Made with [Menu](#)

**Opening Hours:**  
Monday 11:30 -14:30 17:30 -21:30  
Tuesday 11:30 -14:30 17:30 -21:30  
Wednesday 11:30 -14:30 17:30 -21:30  
Thursday 11:30 -14:30 17:30 -21:30  
Friday 11:30 -14:30 17:30 -21:30  
Saturday 11:30 -14:30 17:30 -21:30  
Sunday 11:30 -14:30 17:30 -21:30

