



Muo Cafe Palm Mall Speisekarte

<https://speisekarte.menu/>

Jalan Sungai Ujong, Rasah, Malaysia

+60102184886, +60173020820 - <https://www.foodpanda.my/restaurant/q7re/tealive-palm-mall>

Muo Cafe Palm Mall Speisekarte



Smoothies

MALTY SMOOTHIE RM51

Tea/Koffee/Milk

JASMINE GREEN TEA RM39

Frappes

COCO MOCHA RM49

Milk Tea Series

EARL GREY MILK TEA RM41

Modifiers

EARL GREY TEA LATTE RM44

Espresso (Cold)

SIGNATURE COFFEE RM49

Kung Fu Milk Tea

ORIGINAL MILK TEA RM36

Merchandise

ECO TEA BAG RM24

Milk Teas

ORIGINAL PEARL MILK TEA RM41

Teas and Infusions

EARL GREY TEA RM39

Coffee (La Colombe Coffee Bean)

COCO LATTE RM44

Oatsem Organic Oatmilk

OAT MILK COCO LATTE RM61

Oatsem With Organic Oat Milk

OAT MILK COFFEE LATTE RM76

Coolers & Fresh Juice

MANGO PASSION FRUIT SMOOTHIE RM51

New - Pink Guava

SPARKLING PINK GUAVA TEA WITH ROSELLE JELLY RM52

PINK GUAVA MILKSHAKE WITH ROSELLE JELLY RM62

New - Coco Wafer Smoothie

SIGNATURE SMOOTHIE MADE WITH KITKAT SPREAD RM72

BERRY SMOOTHIE MADE WITH KITKAT SPREAD RM67

Crafted Tea

RADIANT ROSELLE TEA RM41

ROSE PUER TEA LATTE RM44

ROSE PUER TEA RM39

Nishio Fine Matcha

NISHIO FINE MATCHA LATTE RM51

NISHIO FINE MATCHA SMOOTHIE WITH RED BEAN RM64

NISHIO FINE MATCHA MILK TEA WITH RED BEAN RM51

Muo Cafe Palm Mall Speisekarte



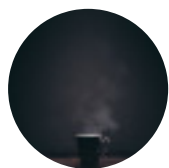
Eats - Snacks

| | |
|------------------------|------|
| RICE FAT CHIPS | RM48 |
| CARAMEL BUTTER POPCORN | RM25 |
| BOBA GUMMY | RM22 |

Mangold

| | |
|--|------|
| MANGOLD COLLAGEN MILKSHAKE WITH JELLY SAGO | RM72 |
| MANGOLD TEA WITH JELLY SAGO | RM52 |
| MANGOLD ORGANIC OAT MILK WITH JELLY SAGO | RM66 |

Coffee



| | |
|---|------|
| BLACK DIAMOND WITH SIGNATURE COFFEE | RM59 |
| COFFEE SMOOTHIE CHOC SHAKA LAVA WITH OREO COOKIE PIECES | RM76 |
| HAZELNUT LATTE | RM49 |
| LATTE | RM49 |

Recommended

| | |
|---|------|
| BANG BANG MILK TEA WITH BROWN SUGAR WARM PEARLS RECOMMENDED | RM44 |
| SIGNATURE BROWN SUGAR PEARL MILK TEA RECOMMENDED | RM41 |
| MILK CHOC SHAKA LAVA WITH OREO COOKIE PIECES RECOMMENDED | RM51 |
| SPARKLING MANGO TEA WITH CHIA SEED OR 3Q JELLY RECOMMENDED | RM44 |

Popular

| | |
|---------------|------|
| HAZELNUT COCO | RM41 |
|---------------|------|

| | |
|------------------------------|------|
| STRAWBERRY PUDDING SMOOTHIES | RM51 |
|------------------------------|------|

| | |
|-----------------------------------|------|
| MANGOLD MILKSHAKE WITH JELLY SAGO | RM62 |
|-----------------------------------|------|

| | |
|---|------|
| CLASSIC ROASTED MILK TEA WITH GRASS JELLY | RM41 |
|---|------|

| | |
|--|------|
| BLACK DIAMOND ROASTED MILK TEA RECOMMENDED | RM46 |
|--|------|

côcô

| | |
|--|------|
| MINT CHOC SMOOTHIES SHAKA LAVA WITH OREO COOKIE PIECES | RM76 |
|--|------|

| | |
|--|------|
| MILK CHOC SHAKA LAVA WITH OREO COOKIE PIECES | RM51 |
|--|------|

| | |
|-----------------------|------|
| MALTY COCO (HORLICKS) | RM44 |
|-----------------------|------|

| | |
|----------------|------|
| SIGNATURE COCO | RM41 |
|----------------|------|

| | |
|--|------|
| COCO SMOOTHIES WITH OREO COOKIE PIECES | RM51 |
|--|------|

Milk Tea

| | |
|-------------------------|------|
| RED BEAN PEARL MILK TEA | RM46 |
|-------------------------|------|

| | |
|--------------------------|------|
| CLASSIC ROASTED MILK TEA | RM36 |
|--------------------------|------|

| | |
|--------------------------------------|------|
| SIGNATURE BROWN SUGAR PEARL MILK TEA | RM41 |
|--------------------------------------|------|

| | |
|--------------------|------|
| SIGNATURE MILK TEA | RM36 |
|--------------------|------|

| | |
|---------------------------|------|
| MALTY MILK TEA (HORLICKS) | RM41 |
|---------------------------|------|

| | |
|-------------------|------|
| HAZELNUT MILK TEA | RM41 |
|-------------------|------|

| | |
|--------------------------------|------|
| BLACK DIAMOND ROASTED MILK TEA | RM46 |
|--------------------------------|------|

Fruit Tea

| | |
|--------------------------------------|------|
| SPARKLING HONEY LEMON WITH ALOE VERA | RM46 |
|--------------------------------------|------|

| | |
|----------------------------|------|
| SPARKLING ICED PLUM COOLER | RM41 |
|----------------------------|------|

| | |
|--|------|
| SPARKLING MANGO TEA WITH CHIA SEED OR 3Q JELLY | RM44 |
|--|------|

Muo Cafe Palm Mall Speisekarte



SPARKLING PASSION FRUIT TEA
WITH CHIA SEED OR 3Q JELLY RM44

SPARKLING LYCHEE TEA WITH
CHIA SEED OR 3Q JELLY RM44

SPARKLING LEMONADE TEA
WITH CHIA SEED OR 3Q JELLY RM44

SPARKLING PLUM TEA WITH CHIA
SEED OR 3Q JELLY RM44

Muo Cafe Palm Mall

Jalan Sungai Ujong, Rasah,
Malaysia

Öffnungszeiten:

Montag 09:30 -21:30
Dienstag 09:30 -21:30
Mittwoch 09:30 -21:30
Donnerstag 09:30 -21:30
Freitag 09:30 -21:30
Samstag 09:30 -21:30
Sonntag 09:30 -21:30

Gemacht mit [Menu](#)