

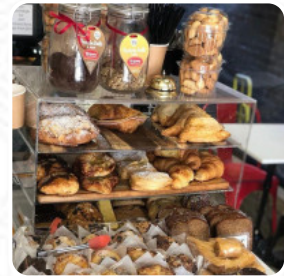
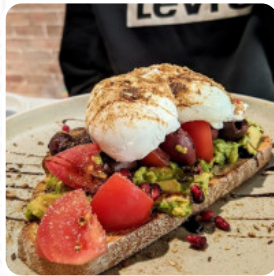


## Mama's Café Patisserie Menu

<https://menuweb.menu>

319 Forest Rd, Bexley, Australia

+61295678405 - <https://www.mamas.net.au>



A complete [menu](#) of Mama's Café Patisserie from [Bexley](#) featuring all 43 meals and drinks can be found here on the menu. **\*\*Discovering the Charm of Mama's Cafe\*\*** Mama's Cafe has emerged as a beloved local gem, praised for its warm atmosphere, attentive service, and delicious offerings. Patrons rave about the exceptional coffee, often regarded as the best in the area, paired with mouthwatering homemade dishes. While most guests highlight the friendly staff and family-friendly environment, some reviews point to occasional lapses in service due to individual experiences. Nevertheless, the cafe's inviting vibe and generous portions consistently attract visitors back for more, making it a must-visit spot for breakfast and brunch in Bexley. Highly recommended for families, coffee lovers, and everyone in between!.

# Mama's Café Patisserie Menu



## Entrées

FATTOUSH SALAD

## Starters

FATTOUSH

## Soft Drinks

JUICE

## Greek Specialties

SPANAKOPITA

## American Food

EGGS BENEDICT

## Arabische Spezialitäten

FALAFELS

## Beverages

JUICES

## Hot Drink

HOT CHOCOLATE

## Coffee

LATTE

## Mixed Specialties

BAKLAVA

## Salads

CAESAR SALAD

HALLOUMI SALAD

## Toast

AVOCADO TOAST

TOAST

## Breakfast

GRANOLA

SCRAMBLED EGGS

## Hot Drinks

TEA

COFFEE

## Restaurant Category

GLUTEN FREE

GREEK

MEDITERRANEAN

## Dessert

BROWNIES

MUFFINS

MILKSHAKES

DONUTS

BANANA BREAD

## Ingredients Used



SPINACH

SALMON

CHOCOLATE

FRUIT

CHEESE

BANANA

BACON

PORK MEAT

# Mama's Café Patisserie Menu



## These Types Of Dishes Are Being Served

ICE CREAM

CHICKEN

BREAD



LAMB

PANINI

FISH

MEAT

BURGER

---

## Mama's Café Patisserie

319 Forest Rd, Bexley, Australia

### Opening Hours:

Tuesday 06:00-15:00

Wednesday 06:00-15:00

Thursday 06:00-15:00

Friday 06:00-15:00

Saturday 06:00-15:00

Sunday 06:00-15:00

Made with [Menu](#)

