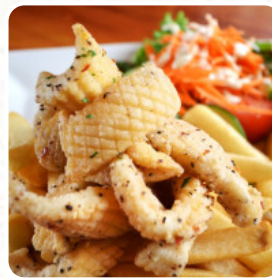
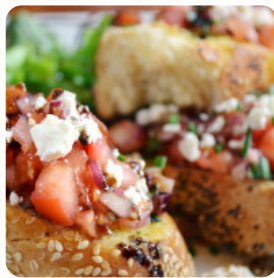




The Pig & Whistle Menu

<https://menuweb.menu>

365 Purves Rd, Main Ridge, Victoria 3928, Australia
(+61)359896130 - <http://www.thepigandwhistle.com.au/>



A complete [menu](https://menuweb.menu) of The Pig & Whistle from Main Ridge featuring all 30 menus and drinks can be found here on the list. The Pig Whistle is a cozy pub located on The Mornington Peninsula, offering a delightful hospitality experience with a blend of British and Australian pub cuisine. Our charming gardens, children's outdoor play area, and newly renovated arts space (The Shed Theatre) make The Pig Whistle a perfect destination. The Shed Theatre is a versatile entertainment venue that hosts a variety of live concerts, cabaret shows, burlesque performances, comedy nights, festivals, and more. Whether you want to enjoy the family-friendly vibe, dine at our restaurant, have a ploughman platter picnic in the beer gardens, or catch a show at The Shed, The Pig Whistle has something to offer for everyone.

The Pig & Whistle Menu



Drinks

BEER

Pork

PORK BELLY

Sauces

GRAVY

Fish

SMOKED SALMON

From The Grill

ROAST PORK

Wine

BOTTLE OF WINE

Easy To Drink

PINOT NOIR

Restaurant Category

DESSERT

Fish Dishes

FISH AND CHIPS

FISH OF THE DAY

Starters & Salads

ANTIPASTO

POTATO CHIPS

Dessert

STICKY DATE PUDDING

BROWNIE

These Types Of Dishes Are Being Served

FISH

SALAD

BREAD

TUNA STEAK

DESSERTS

TURKEY

Ingredients Used



BEEF

PORK MEAT

CHEESE

SEAFOOD

SAUSAGE

HAM

TOMATO

CORNERD BEEF

VEGETABLES

BUTTER

The Pig & Whistle Menu



The Pig & Whistle

365 Purves Rd, Main Ridge,
Victoria 3928, Australia

Opening Hours:

Sunday 12:00-22:00

Thursday 12:00-23:00

Friday 12:00-23:00

Saturday 12:00-23:00

Made with [Menu](#)

